



Southeast Michigan Land Conservancy



You can Make a Difference Today: Superior Greenway Expansion Project

Most people want beautiful places near where they live, work and recreate. Sometimes those can be hard to find. Right here in southeast Michigan, there is such a place – **the Superior Greenway**.

Located between Ann Arbor and Detroit, the Greenway's 2,007 acres of protected lands showcase the rural scenic and natural beauty that was once commonplace throughout the region. People travel from places near and far to see rare birds, walk miles of nature trails, and drive through pastoral settings.

The purpose of the Superior Greenway is to create a significant wildlife corridor along with nature experiences for local residents and the general public. An exciting outcome has been the reported sightings of new and returning animal species. These include: Short-eared owls, Bobolinks, Leopard frogs, and mink (just to name a few).

Recently, Southeast Michigan Land Conservancy acquired 100 acres of rural land which protects $\frac{3}{4}$ of a mile of protected scenic views along Prospect and Cherry Hill Roads.

The Jack R. Smiley Nature Preserve

is named after SMLC's founder and located in the heart of the Superior Greenway.

You have a unique opportunity to help SMLC fund this natural gem. SMLC raised \$168,000 in 2012 thanks to supporter donations and generous gifts from The Carls Foundation, the St. Francis Foundation, Detroit Audubon Society and the Speckhard-Knight Charitable Foundation. With your help we can reach our total project goal of \$300,000.

The Superior Greenway is a reality today thanks to Jack's vision and the many supporters who believed in a better life for southeast Michigan residents. Help us protect this beautiful place with a gift today that will keep on giving forever.

Thank You.

(OVER)

Superior Greenway Expansion Project

How to Give to the Superior Greenway Expansion Project:

- Please make checks payable to “Southeast Michigan Land Conservancy”.
- Please note in the memo line that the gift is for the “Superior Greenway Expansion Project”.
- Please make your pledge and cash donations prior to 12-31-13.
- Your project donations will fund our project costs and local stewardship projects.

Southeast Michigan Land Conservancy

8383 Vreeland Rd.

Superior Township, MI 48198

734-484-6565 (phone)

734-484-0617 (fax)

www.smlcland.org

Photography by Charles Scott.  Printed on 30% recycled paper.

Project Facts:

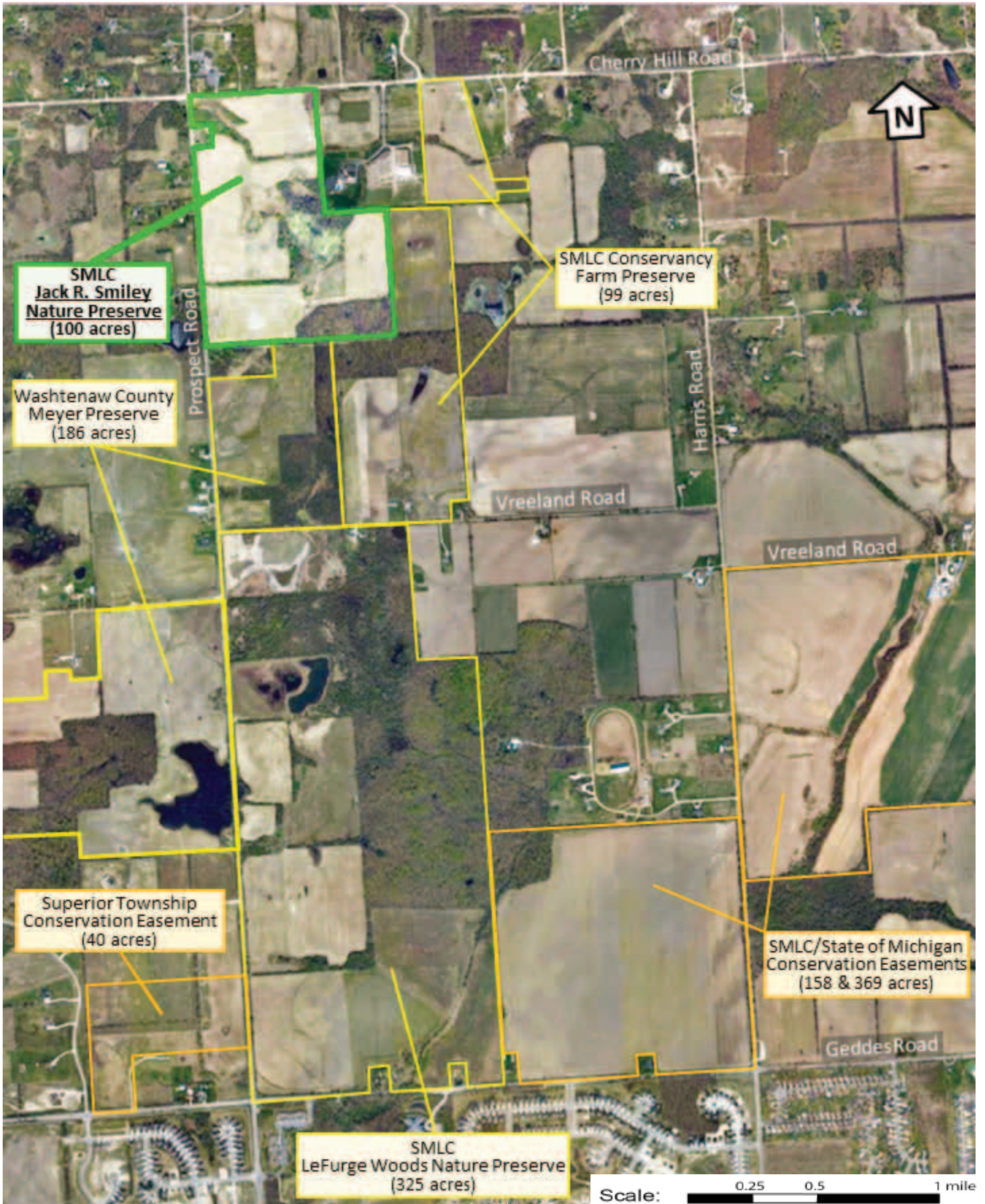
- 100.33 acres of rolling farmland, wetlands, and woods
- Contiguous to SMLC’s Conservancy Farm and the County’s Meyer Preserve
- Part of the Rouge River Watershed, an EPA designated Area of Concern
- Fowler Creek, a Rouge River tributary, flows through the preserve
- Significant scenic vistas
- Site of future Superior Greenway Nature Trail
- The Superior Greenway is a partnership project of SMLC, the City of Ann Arbor Greenbelt Program, Superior Township and Washtenaw County Parks and Recreation Commission

“The Superior Greenway is a special place which will be treasured by generations to come. Its true significance, however, is best found in the many people who have made it happen. This community effort exemplifies the value of working together for the betterment of all.”

– Jack R. Smiley, SMLC Founder



Superior Greenway Expansion Project Map



Southeast Michigan Land Conservancy
8383 Vreeland Rd.
Superior Township, MI 48198



734-484-6565 (phone)
734-484-0617 (fax)
www.smlcland.org