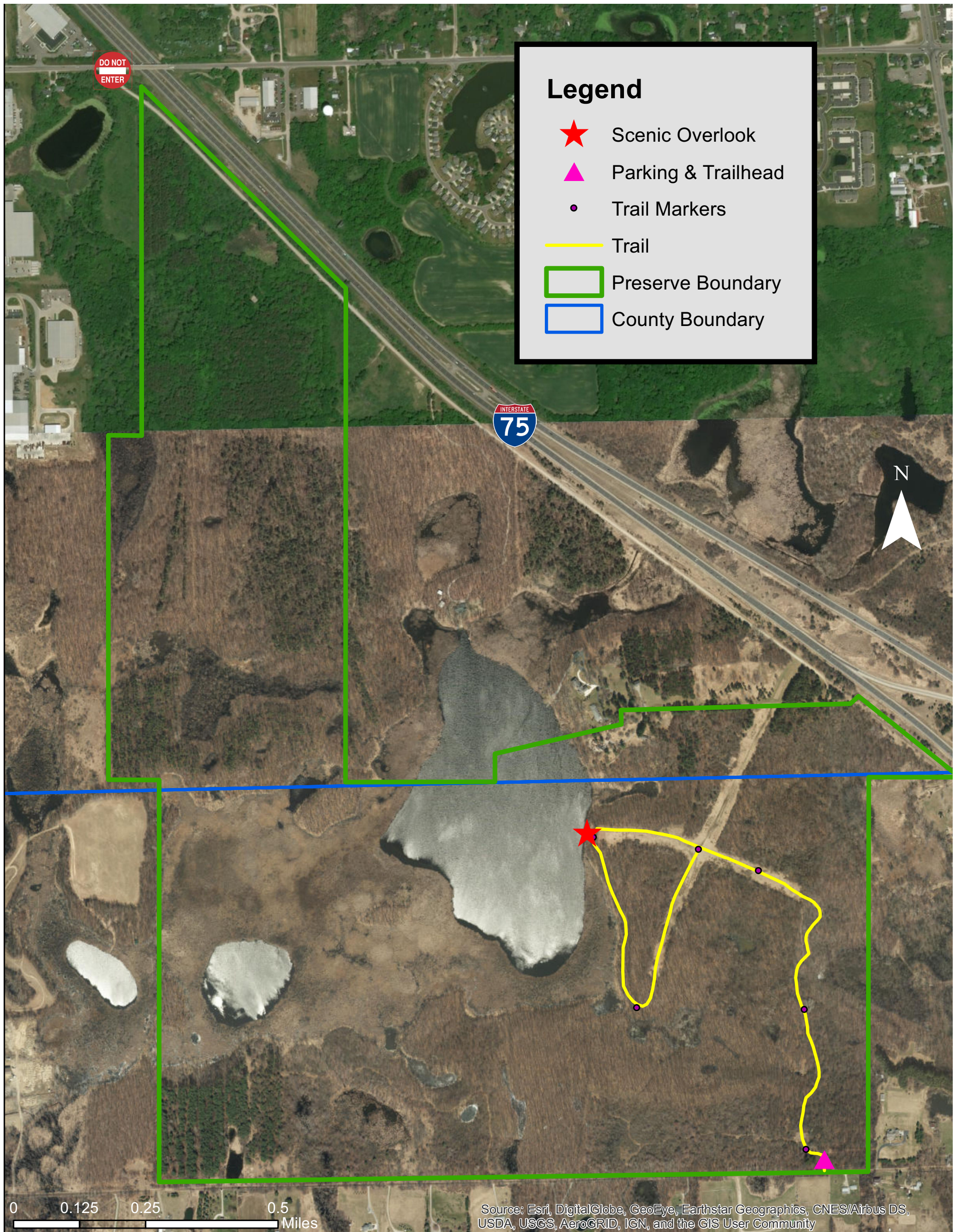




# Southeast Michigan Land Conservancy

## Lost Lake Nature Preserve

# TRAIL MAP



### The Preserve Loop Trail

The trail is approximately **2.5 miles** in total length. It meanders through a dense forest which opens up to an old airplane "prairie" runway and leads to the scenic overlook of Slack Lake at one mile. Past the overlook the trail follows the lakeshore through an old growth forest before it reconnects with the runway. The trail is great for hiking and cross country skiing, however, the lake is not accessible to the public.